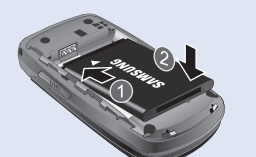
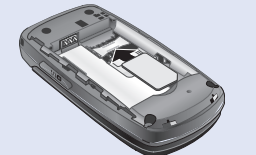


SGH-T201G User's Guide



Installing the SIM card and battery

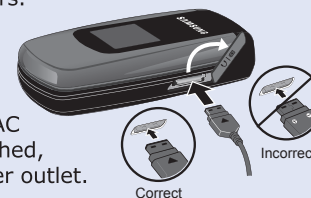
1. Remove the battery cover by pressing the battery lock down and sliding the battery cover away, as shown.
2. Make sure the gold contacts of the card face into the phone, and the notch in the SIM card is aligned with the notch in the phone, as you slide the SIM card into the socket.
3. Install the battery by aligning the battery tabs with the slots at the bottom of the phone.
4. Press the battery down until it clicks into place. Make sure that the battery is properly installed before switching on the phone.
5. With the battery in position on the phone, place the cover back on the handset and slide it in until it clicks.



Charging the battery

Your phone is powered by a rechargeable Li-ion battery. Use the travel adaptor to charge the battery, and use only Samsung approved batteries and chargers.

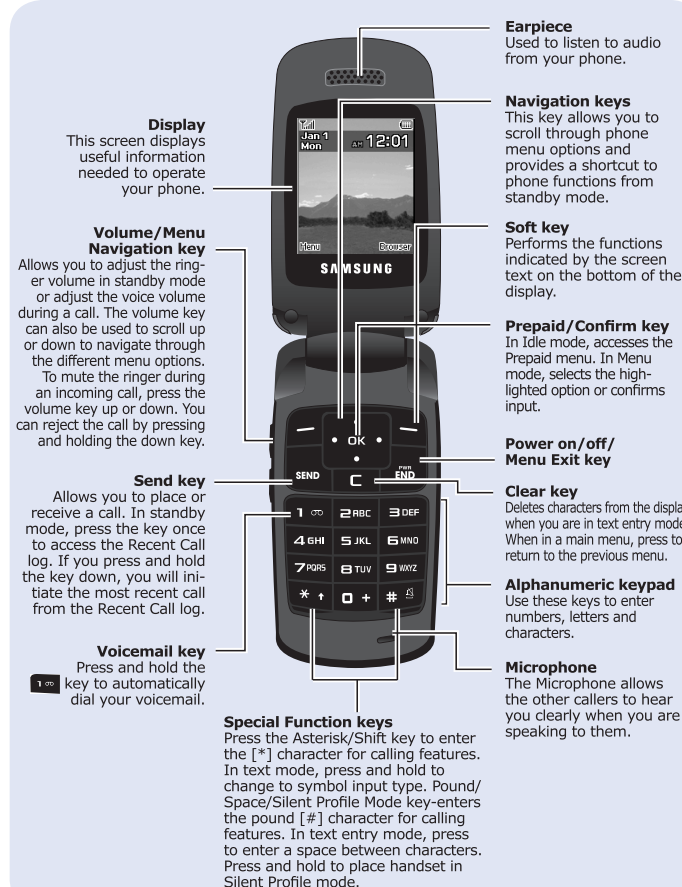
1. Plug the connector of the travel adaptor into the jack on the side of the phone.
2. Plug the adaptor into a standard AC wall outlet. When charging is finished, unplug the adaptor from the power outlet.
3. Remove the adaptor from the charger port.



Note: You must fully charge the battery before using your phone for the first time. A fully discharged battery requires up to 4 hours of charge time.

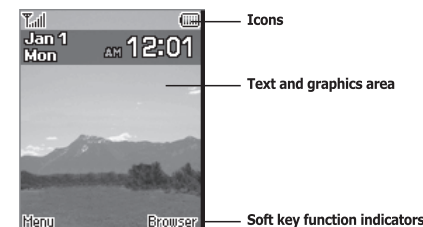
Note: You must unplug the adaptor before removing the battery from the phone during charging to avoid damage.

Phone layout and key functions



Display

The display has 3 areas:



Your phone displays the following status indicators on the top of the screen:

Icon	Description
	Shows the received signal strength. The greater the number of bars, the stronger the signal.
	Appears when a new text message has been received.
	Appears when a new voice mail has been received.
	Appears when you set an alarm to ring at a specified time.
	Appears when you there is no network coverage available.
	Appears when a call is in progress.
	Appears when you are connected to a WAP service.
	Appears when Silent Profile Mode, Vibration or Mute is active.
	Shows the level of your battery. The more bars you see, the more power you have remaining.

Switching on or off the phone

1. Open the phone. Press and hold the until the phone power-on screen displays.
2. If the phone asks you to enter a password, enter a password and press the **OK** soft key or the key.
3. If the phone asks for a PIN, enter the PIN and press the **OK** soft key or the key. The phone searches for your network and after finding it, the Idle screen displays. Now, you can make or receive calls.
4. When you wish to switch off the phone, press and hold the key until the power-off image displays.

Changing the display language

1. In Idle mode, press **Menu** → **Settings** → **Set Phone** → **Language** and press the **Select** soft key or the key. The Language options display: **Automatic**, **English** and **Español**.
2. Highlight your language selection and press the **Save** soft key.

When the language option is set to **Automatic**, the language is automatically selected according to the language used on your SIM card.

Making a call

1. When the Idle screen displays, enter the area code and phone number, and press the key.

When you want to finish your call, briefly press the key, or simply close your phone.

Answering a call

1. From the Idle Screen press the key or the **Accept** soft key to answer the incoming call. Press the key or the **Reject** soft key to reject the call.
2. Press the key to end the call..

Adjusting the volume

1. During a call, if you want to adjust the earpiece volume, use the Volume keys on the left side of the phone.

Press the key to increase the volume level and the key to decrease the level.

In Idle mode, you can also adjust the ringer volume using these keys.

Changing a ringtone for calls

1. In Idle mode, press the **Menu** → **Settings** → **Set Sound Profiles** and press the **Select** soft key or the key. The following options are available: Normal, Silent, Driving, and Outdoor.
2. Use the **Up** or **Down** navigation key to scroll to and set options and press the key.
3. Use the **Left** and **Right** Navigation keys to access sound settings options for **Call**, **Message** and **Phone**.

Redialing recent numbers

1. From the Idle Screen, press **Menu** → **Recent Calls**.
2. Use the **Up** and **Down** navigation keys to scroll through the Recent Calls options. You can select from **All Calls**, **Missed Calls**, **Calls Made**, and **Calls Received** for redialing in the Recent Calls.

– Or –

From the Idle Screen, press the key to display a list of the most recent numbers used in the order you dialed or received them.

3. Use the **Up** and **Down** navigation keys to scroll through the numbers until the number you want highlights.
4. To dial the number, highlight the number and press the key.

Using the menus

Accessing a Menu Function by Scrolling

1. In Idle mode, press the **Menu** → **Settings** → **Set Phone**. If the menu contains sub-menus, for example, you can access them by highlighting the option and by pressing the **Select** soft key or the key.
2. If the menu that you have selected contains further options, repeat this step. To scroll through the menus, press the **Up** or **Down** navigation key or the **Volume** key (located on the left side of your phone). Press the **Select** soft key, or the key to make your selection.
3. To return to the previous menu level, press the **Back** soft key or the key.
4. To exit the menu without changing the settings, press the key.

Using Shortcuts

Numbered menu items, such as menus, sub-menus, and options can be quickly accessed by using their shortcut numbers. In Menu mode, Main Menu can be accessed by pressing the number keys (1 to 9) corresponding to their location on the screen.

Example: Accessing the Language menu.

1. Press the **Menu** soft key.
2. Press the key for Settings.
3. Press the key for Set Phone.
4. Press the key for Language. The available languages are displayed.

Menu map

1. Prepaid <ul style="list-style-type: none">1.1 Add Airtime1.2 Buy Airtime1.3 My Phone Number1.4 Airtime Info1.5 Airtime Display1.6 Serial Number1.7 SIM Number1.8 Code Entry Mode	3.9 Call Costs (SIM dependent) <ul style="list-style-type: none">4. Messages<ul style="list-style-type: none">4.1 Create New Message4.2 Inbox4.3 Sent4.4 Outbox4.5 Drafts4.6 My Folder4.7 Templates4.8 Delete All4.9 Messaging Settings4.0 Used Space5. Browser<ul style="list-style-type: none">5.1 Home5.2 Favorites5.3 Enter URL5.4 Clear Cache6. Alarms<ul style="list-style-type: none">6.1 Wake-up Alarm6.2 Alarm 16.3 Alarm 26.4 Alarm 36.5 Alarm 4	7. My Folder <ul style="list-style-type: none">7.1 Audio7.2 Graphics7.3 Used Space 8. Tools <ul style="list-style-type: none">8.1 Calendar8.2 Calculator8.3 Tip Calculator8.4 Converter8.5 Timer8.6 Stopwatch8.7 World Time 9. Settings <ul style="list-style-type: none">9.1 Set Sound Profiles9.2 Set Display9.3 Set Time & Date9.4 Set Phone9.5 Set Calls9.6 Set Applications9.7 Reset Settings9.8 Used Space
2. Contacts <ul style="list-style-type: none">2.1 Contact List2.2 Add New Contact2.3 Group2.4 Speed Dial List2.5 Reject List2.6 Contacts Settings	3. Recent Calls <ul style="list-style-type: none">3.1 All Calls3.2 Missed Calls3.3 Calls Made3.4 Calls Received3.5 Voice Mail3.6 Delete All3.7 Call Time3.8 Data Volume	

Entering text

The **Text Input** option switches the key entry functions from T9 Mode, Alphabet Mode, Number Mode, and Symbol Mode.

1. In a text input field, to change the text input mode, press the key.
2. A short press of the key changes the text case between the **Abc**, **ABC**, **abc**, and **123** mode. A long press of the key changes the text case between **T9[E]Ab**, **T9[E]AB**, **T9[E]ab** and **123**.

When you are in a field that allows characters to be entered, you will notice the text input mode indicator on the display.

T9 mode

1. In T9 mode, begin entering a word by pressing the 2 to 9 keys. Press each key only once for each letter. The built-in dictionary lists words that match the keystrokes you have entered.

Example: To enter "Hello", press 4, 3, 5, 5, and 6.

2. Enter the whole word before editing or deleting the keystrokes.

3. Insert a space by pressing the key and start entering the next word.

• Depending on the software installed or your service provider or country, some of the descriptions in this guide may not match your phone exactly.

• Depending on your country, your phone and accessories may appear different from the illustrations in this guide.



Modes

Alphabet mode

To use the Alphabet Mode use the **[ABC]** to **[123]** keys to enter your text.

- Press the key labeled with the letter you want:
 - Once for the first letter
 - Twice for the second letter (And so on)
- Select the other letters in the same way.

Number mode

Number mode enables you to enter numbers into a text message. Press the keys corresponding to the digits you want to enter.

Symbol mode

Symbol mode enables you to insert symbols and punctuation marks into text.

- To enter symbol mode press and hold the **[#*]** key.
- To select a symbol, press the corresponding number key.
- To display more symbols, press the **Up** or **Down** navigation key.
- To clear the symbol(s), press the **[C]** key. When the input field is empty, this key returns the display to the previous mode.
- To insert the symbol(s) into your message, press the **OK** soft key or the **[OK]** key.



Sending an SMS message

- In Idle mode, press the **Menu** → **Messages** → **Create New Message** and press the **Select** soft key or the **[OK]** key.
- When you have finished writing your message, press the **Options** soft key. Choose from the following options:
 - Insert: allows you to insert a message from the Text Template, the Contact List, or information from your Favorites menu.
 - Save to: allows you to save the message to Drafts or My Folder.
 - Select Language: allows you to set the language to English, or Español.
 - Input Mode: allows you to change the input mode for your text message.
 - Back: returns to the Messaging menu with the option to save the message to the Drafts folder.
- Press the **Send To** soft key and enter the recipient information.
- Press the **Send** soft key to send the message.



Quick feature reference

This section provides brief explanations of features on your phone.

Menu	Description
<i>Menu > Recent Calls > All Calls, Missed Calls, Calls Made, Calls Received</i>	View the most recent calls you have dialed, received, or missed.
<i>Menu > Recent Calls > Voice Mail</i>	Access your voicemail server and listen to messages on the network.
<i>Menu > Recent Calls > Delete All</i>	Delete the call logs in each call type, or all logs at once.
<i>Menu > Recent Calls > Call Time</i>	View the duration of recent calls you have dialed and received. Also reset the time counter.
<i>Menu > Recent Calls > Data Volume</i>	View your Recent Volume and Total Volume for Sent, Received and Total usage.
<i>Menu > Tools > Calendar</i>	Displays the Calendar on your phone. Lets you set appointments and view events.
<i>Menu > Tools > Calculator</i>	Perform basic arithmetic functions.
<i>Menu > Tools > Tip Calculator</i>	Calculate a tip using different percentages.
<i>Menu > Tools > Converter</i>	Do conversions such as length and temperature.
<i>Menu > Tools > Timer</i>	Start a timer.
<i>Menu > Tools > Stopwatch</i>	You can use this feature to measure intervals of time for 30 separate times.
<i>Menu > Tools > World Time</i>	World Time allows you to view the time of day or night in another parts of the world. World displays time in the 2 different time zones around the world.
<i>Menu > Alarms</i>	Set an alarm to sound at a specific time.

Menu	Description
<i>Menu > Contacts > Contact List</i>	Search for contacts in Phonebook.
<i>Menu > Contacts > Add New Contact</i>	Add a new contact to Phonebook.
<i>Menu > Contacts > Speed Dial List</i>	Assign speed dial numbers (2 to 9) for eight of your most frequently dialed numbers.
<i>Menu > Contacts > Contacts Settings > Copy All to</i>	Copy all contacts to your phone or to your SIM card.
<i>Menu > Messages > Create New Message</i>	Create and send messages to other mobile phones.
<i>Menu > Messages > Inbox or Sent or Outbox</i>	Read received messages, sent messages or resend failed messages.
<i>Menu > Messages > Templates</i>	Preset templates of frequently used messages.
<i>Menu > Messages > Delete All</i>	Delete messages in each message folder, or all messages at once.
<i>Menu > Messages > Messaging Settings</i>	Set options for using messaging services.
<i>Menu > Settings > Set Sound Profiles > Normal > Call</i>	Select a ringtone for incoming calls, a volume level, or an alert type.
<i>Menu > Settings > Set Sound Profiles > Normal > Message</i>	Select the alert ringtone and alert type for incoming messages or set how often you are informed of a new message.
<i>Menu > Settings > Set Sound Profiles > Normal > Phone > Power on/off Tone</i>	Set the phone to sound when it is switched on or off.
<i>Menu > Settings > Set Sound Profiles > Normal > Phone > Keypad Tone</i>	Set the phone to beep when you press a key.

Menu	Description
<i>Menu > Settings > Set Sound Profiles > Silent</i>	Set how the phone acts to alert you to a specific event while in Silent mode.
<i>Menu > Settings > Set Display</i>	Change settings for the display and backlight.
<i>Menu > Settings > Set Display > Main Display</i>	Change your wallpaper, Idle screen display, Main menu style and dialing display.
<i>Menu > Settings > Set Time & Date</i>	Set the time and date format.
<i>Menu > Settings > Set Phone > Language</i>	Select a language to be used for the display text or text input mode.
<i>Menu > Settings > Set Phone > Security</i>	Protect the phone against unauthorized use.
<i>Menu > Settings > Set Calls > General > Call Status Tones > Connection Tone</i>	Set the phone to beep when a call is connected to the system.
<i>Menu > Settings > Set Calls > General > Call Status Tones > Minute Minder</i>	Set the phone to beep every minute during a call to keep you informed of the length of your call.
<i>Menu > Settings > Set Calls > General > Alerts on Call</i>	Set the phone to alert you when you receive a new message or when the time for an alarm comes during a call.
<i>Menu > Settings > Set Calls > Voice Call > Auto Redial</i>	Set the phone to make up to ten attempts to redial a phone number after an unsuccessful call.
<i>Menu > Settings > Set Calls > General > Call Answer</i>	Answer an incoming call by pressing any key, except the End key.
<i>Menu > Settings> Reset Settings</i>	Reset the phone to the factory default settings.



Important safety precautions

Read these guidelines before using your wireless phone. Failure to comply with them may be dangerous or illegal.

Drive safely at all times

Do not use a hand-held phone while driving; park the vehicle first.

Switching off when refueling

Do not use the phone at a refueling point (service station) or near fuels or chemicals.

Switching off in an aircraft

Wireless phones can cause interference. Using them in an aircraft is both illegal and dangerous.

Switching off near all medical equipment

Hospitals and health care facilities may be using equipment that could be sensitive to external RF energy. Follow any regulations or rules in force.

Interference

All wireless phones may be subject to interference, which could affect their performance.

Special regulations

Follow any special regulations in force in any area and always switch off your phone whenever it is forbidden to use it.

Water resistance

Your phone is not water-resistant. Keep it dry.

Sensible use

Use only in the normal position (held to the ear). Avoid unnecessary contact with the antenna when the phone is switched on.

Emergency calls

Key in the emergency number for your present location, then press **[END]**. Do not end the call until given permission to do so.

Small children and your phone

Keep the phone and all its parts including accessories out of reach of small children.

Accessories and batteries

Use only Samsung-approved batteries and accessories, such as headsets. Use of any unauthorized accessories could damage your phone and may be dangerous.

CAUTION

Risk of explosion if a battery is replaced by an incorrect type. Dispose of used batteries according to the instructions.



At very high volume, prolonged listening to a headset can damage your hearing.

Qualified service

Only qualified service personnel may repair your phone.



SAR information

Your wireless phone is a radio transmitter and receiver. It is designed and manufactured not to exceed the emission limits for exposure to radio frequency (RF) energy set by the Federal Communications Commission (FCC) of the U.S. Government. These limits are part of comprehensive guidelines and establish permitted levels of RF energy for the general population. The guidelines are based on the safety standards that were developed by independent scientific organizations through periodic evaluation of scientific studies.

The standards include a substantial safety margin designed to assure the safety of all persons, regardless of age and health.

The exposure standard for wireless phones employs a unit of measurement known as Specific Absorption Rate (SAR). The SAR limit set by the FCC is 1.6 W/kg¹. The highest SAR values for this model phone were Head: 1.26 W/kg, Body-worn: 0.545 W/kg.

¹ In the U.S. and Canada, the SAR limit for mobile phones used by the public is 1.6 watts/kg (W/kg) averaged over one gram of tissue. The standard incorporates a substantial margin of safety to give additional protection for the public and to account for any variations in measurements.

SGH-T201G

SAMSUNG

*Many of the features and services described are network dependent and may require additional subscription and/or usage charges. Not all features are available for purchase or use in all areas. Other conditions and restrictions may apply. See carrier for more information.

© 2009 Samsung Telecommunications America, LLC. Samsung is a registered trademark of Samsung Electronics America.