

## QUICK START GUIDE

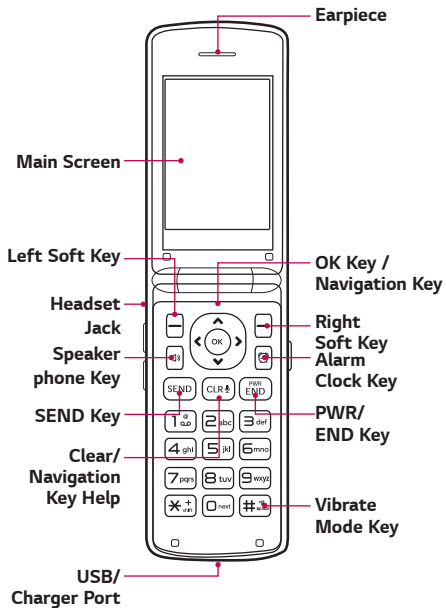
# LG-UN540



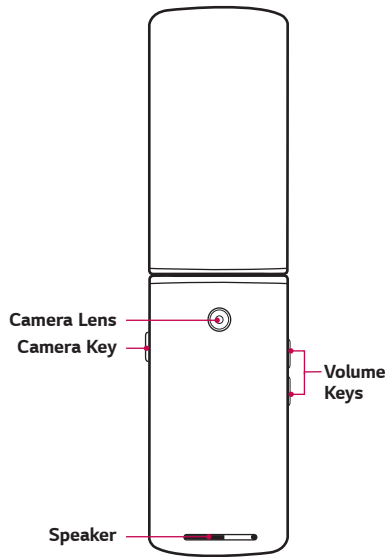
MBM65464301 (1.0)

U.S. Cellular®  
Customer Care:  
1-888-944-9400

## Phone layout



## Phone layout



## Getting Started with Your Phone

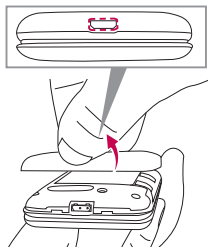
All materials in this QSG including, without limitation, the design, the text, and any marks are the property of LG Electronics USA, Inc. Copyright © 2016 LG Electronics USA, Inc. ALL RIGHTS RESERVED. LG, LG Life's Good and the LG logo are registered trademarks of LG Corp. Bluetooth® is a registered trademark of Bluetooth SIG, Inc. worldwide. All other trademarks and copyrights are the property of their respective owners. Unless otherwise specified herein, all accessories referenced herein are sold separately. All features, functionality, and other product specifications are subject to change.

Visit [www.uscellular.com](http://www.uscellular.com) to view the user guide and more information.

Some content and illustrations may differ from your device depending on the region, service provider, software version, or OS version, and are subject to change without prior notice.

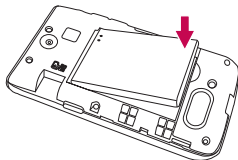
### Step 1. Remove the Back Cover

Use the fingertip cutout at the bottom of the phone to pull the back cover off.



### Step 2. Insert the Battery

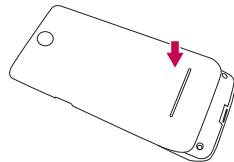
Align the battery contacts with the terminals in the battery compartment and push the battery down until it clicks into place.



## Getting Started with Your Phone

### Step 3. Replace the Back Cover

Place the back cover over the battery compartment, then press it downward until it clicks into place.



### Step 4. Charge the Phone

Your device comes with a Wall/USB charger and a USB cable which connect together to charge your phone.

Before turning on your phone, charge it fully.



USB cable

#### **NOTE**

- Please make sure that the '↓' side faces up before inserting a charger or USB cable into the Accessory/Charger Port of your phone.

