

QUICK START GUIDE

LG G Pad X™ II_{10.1}

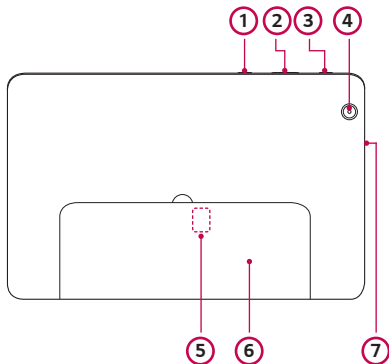


MBM65432601 (1.0)

U.S. Cellular®
Customer Care:
1-888-944-9400

Device layout

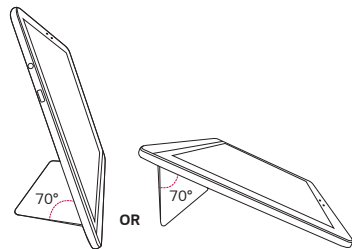
To turn on the device, press and hold the Power/Lock key for a few seconds.



- 1 QuickButton key
- 2 Volume keys
- 3 Power/Lock key
- 4 Rear-facing camera
- 5 SIM card/ microSD card slot
- 6 Kickstand
- 7 Charger/USB port (C-type)

Device layout

Kickstand view



⚠ Precautions when using the kickstand

- Do not open the kickstand more than the maximum of 70° (See the illustrations as shown in the figure above). Attempting to open the kickstand further than the maximum of 70° may cause damage to the device.
- Remove items between the device and the kickstand before closing the kickstand. If items become lodged in between the device and the kickstand it may cause damage to the device.
- Make sure not to close the kickstand when any part of your body, such as a finger, is between the kickstand and the device. Doing so may cause injury.
- Be careful not to hurt yourself with the kickstand.

QuickButton key

Press to launch an app. Press and hold to change the app you wish to get quick access to.

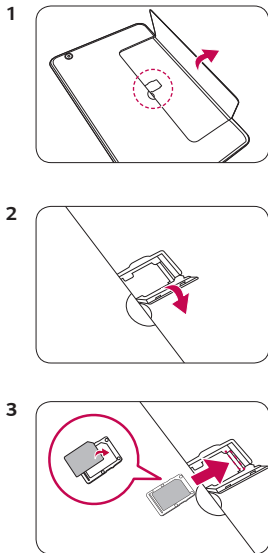
All materials in this QSG including, without limitation, the design, the text, and any marks are the property of LG Electronics MobileComm U.S.A., Inc. Copyright © 2016 LG Electronics MobileComm U.S.A., Inc. ALL RIGHTS RESERVED. LG, LG Life's Good and the LG logo are registered trademarks of LG Corp. Google and Android are trademarks of Google Inc. Bluetooth® is a registered trademark of Bluetooth SIG, Inc. worldwide. Wi-Fi® and the Wi-Fi logo are registered trademarks of the Wi-Fi Alliance. All other trademarks and copyrights are the property of their respective owners. Unless otherwise specified herein, all accessories referenced herein are sold separately. All features, functionality, and other product specifications are subject to change.

Visit www.uscellular.com to view the user guide and more information.

Some content and illustrations may differ from your device depending on the region, service provider, software version, or OS version, and are subject to change without prior notice.



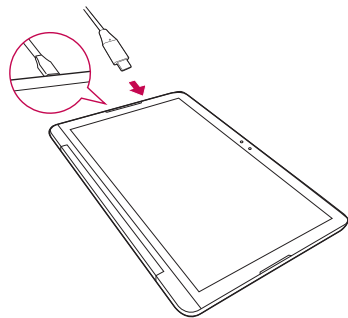
Installing the Nano SIM card



NOTE

- Only Nano SIM cards work with this device.

Charging the device



- The Charger/USB port (C-type) is at the bottom of the device.
- To maximize battery life, make sure that the battery is fully charged before you use it the first time.