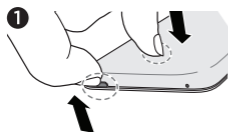


# Your HTC Desire 620 dual sim

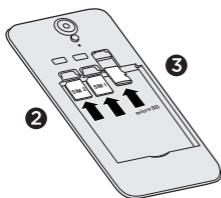
## Inserting your micro SIM and microSD cards

### IMPORTANT: USE A STANDARD MICRO SIM ONLY.

Inserting a smaller size SIM, such as a nano SIM with an adapter or a modified SIM, may cause the card to not fit properly or damage the card slot.



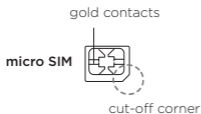
1. Make sure your phone is off and is facing down. From the USB port, remove the back cover with your finger.



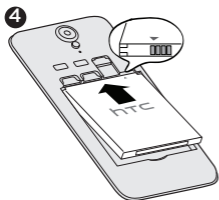
2. With the gold contacts facing down and the cut off corner facing in, insert the micro SIM cards into the slots.

**Note:** You can insert a 4G LTE or 3G micro SIM card in either slot. When you have two cards inserted, only one card can connect to the 4G/3G network. The other card will connect to the 2G network only.

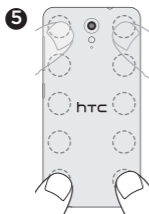
SIM 1 connects to the 4G/3G network by default. You can also set which card connects to 4G/3G. For details, see the user guide.



3. With your microSD™ card's gold contacts facing down and the narrow side facing in, insert the microSD card into the slot on the right.



4. Reinsert the battery into the battery compartment.



5. To replace the back cover, align the edges and press down on the cover from top to bottom along the edges until it clicks into place.

## Want some guidance on using your phone?

On your phone, check out our friendly walkthroughs in the **Tips & Help** app. For self-help in troubleshooting basic problems, you can use the **HTC Guide** app. Or go to [www.htc.com/support/](http://www.htc.com/support/) to find tutorials, the user guide, FAQs, latest news, and more.

© 2014 HTC Corporation. All rights reserved.

HTC, the HTC logo, and HTC Desire are trademarks of HTC Corporation.

microSD is a trademark of SD-3C LLC.

All other company, product and service names mentioned herein are trademarks, registered trademarks or service marks of their respective owners.

htc.com

Complies with  
IDA Standards  
DB 104368



91H0xxxx-xxM Rev.A